

Data-Driven Delivery in SMP – Welding, Fabrication & Mechanical Installations Reinvented.



CAPABILITY STATEMENT



Who we are



Rimech Engineering is a Western Australian-based structural, mechanical and piping (**SMP**) contractor, delivering high-quality SMP services to **Projects** and **Maintenance** across the construction, pharmaceutical, education, mining and industrial sectors.

Our Sectors:

Structural

- Structural steel Fabrication and Site Installation
- Custom Metal Fabrication
- Shed Fabrication and Installations
- Fabrication of railings, barriers and gates

Mechanical

- Mechanical plumbing
- Pump Maintenance and installations
- Threaded pipework, sprinkler and Air lines
- HVAC and Ducting Installations

Piping

- Carbon and Stainless-Steel Pipework Fabrication
- Pipefitting and Installation.
- Coded Pipe Welding

Commercial Maintenance and Repairs

Schedules and reactive maintenance and SMP repair works in the commercial sector.

- General Steel Repairs and Welding
- Plant Rooms maintenance and repairs
- HVAC and Ducting Repairs

24/7 call-out and emergency response for urgent breakdowns

"A new class of subcontractor. Powered by live RMS."



Core Servies



- **Projects**
- **Maintenance**
- Structural Steel
- Pipe Welding
- Metal Fabrication
- Mechanical Plumbing
- Threaded Pipework

"A new class of subcontractor. Powered by live RMS."



Sectors We Serve

- Construction
- Mining & Resources
- Water Infrastructure
- Civil
- Industrial Facilities

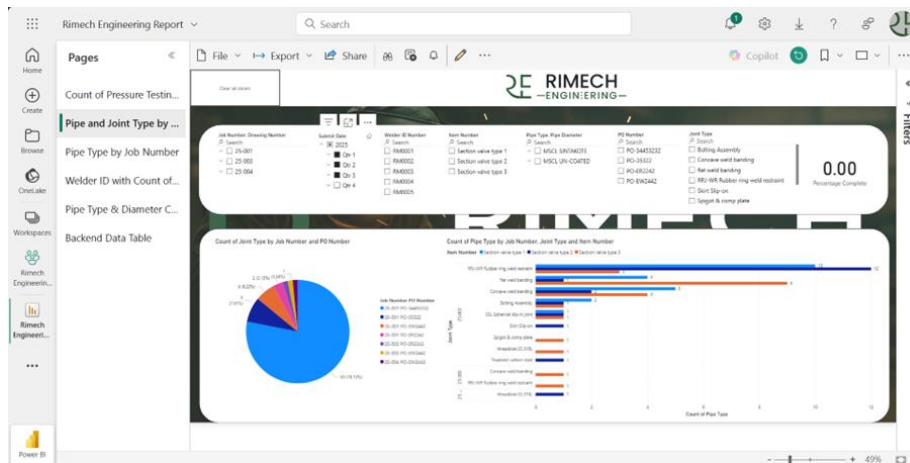


"A new class of subcontractor. Powered by live RMS."



Our Edge: R.M.S.

Introducing – Rimech Management System



"We don't wait to report — we deliver live."

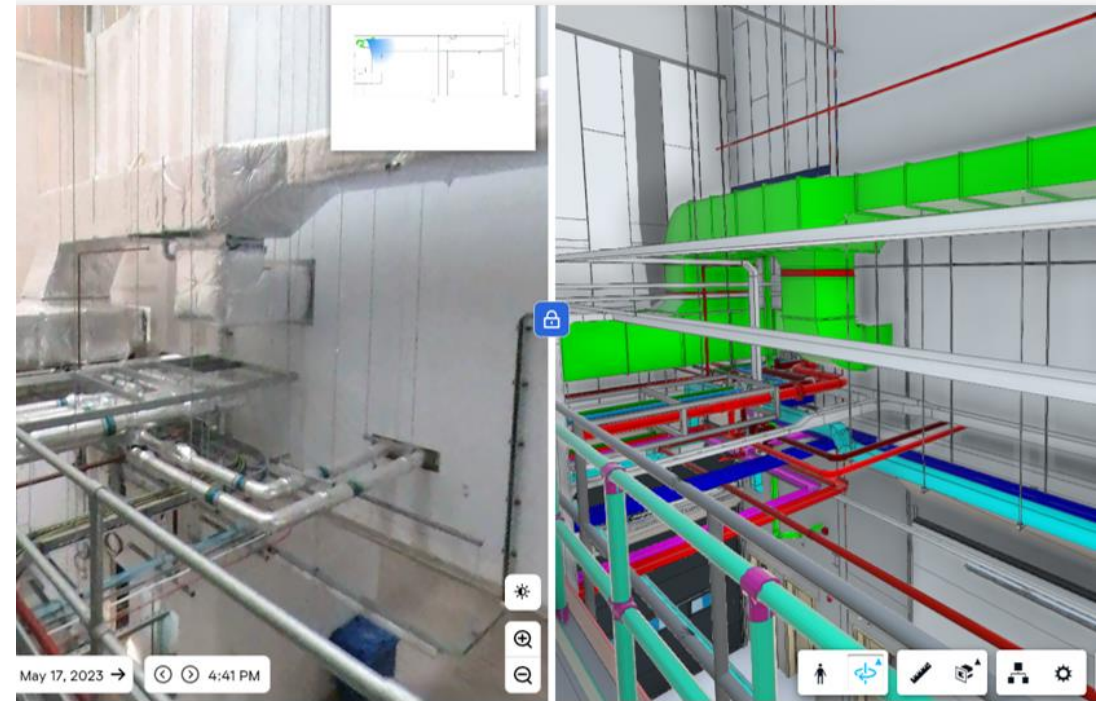
- We don't just deliver projects — we live stream them.
- Rimech's proprietary R.M.S. is a fully integrated digital project management and QA platform built on SharePoint and visualised through live Power BI Dashboards. Every project is tracked in real time, giving our clients live visibility across:
- Team time and attendance via facial recognition
- Digital documentation use by all crews
- Daily production status logged directly by crews
- QA verification by site leads and cross-checks via Open Space AI visual cameras
- Project KPIs, progress vs target, and remaining scope
- This system does not rely on manual administration. All data is captured live onsite, extracted by the workers themselves, and automatically reconciled against project milestones.



Why R.M.S Matters

- Our RMS removes human error, eliminates reporting lag, and builds total transparency into subcontractor delivery. Clients don't need to call for updates, they can see it live.

"We keep Rimech honest by giving our client a clear live view of how we are doing across each project."



"A new class of subcontractor. Powered by live RMS."



Trusted by

Water Corporation

Georgiou

Lynas Rare Earths

Pipeline Technics

Agito Group

"A new class of subcontractor. Powered by live RMS."



Systems & Compliance

Rimech Engineering's commitment to operational excellence is underpinned by our Integrated Management System (IMS), aligned with the following internationally recognised standards:

-  **ISO 9001:2015** – *Quality Management*
-  **ISO 45001:2018** – *Occupational Health & Safety*
-  **ISO 14001:2015** – *Environmental Management*
- WHS Compliant in line with WA Worksafe Standards
- Rimech RMS with Power BI Integration
- QA/QC Traceability with photographic and digital recordkeeping

CONTACT

Let's Keep Your Job Running Smoothly

Whether it's planned maintenance, urgent repairs, or project works, Rimech Engineering delivers quality, reliability, and transparency every step of the way.

Contact us today to discuss your needs — and see our RMS live tracking system in action.

Brian Duignan
Director
Rimech Engineering

Available 24/7 for call-outs, weekends, and emergency works.

P// 08 6285 4525
M// 0477 2700 35
E// brian.duignan@rimech.com.au
A// Fenellia Cr, Craigie, WA 6025

